



Pechino ALL Extendable Table

design Midj R&D, 2014

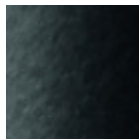


Colors and Materials

Structure



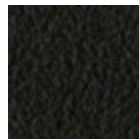
White steel



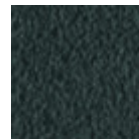
Black steel



Sand steel



Brown steel

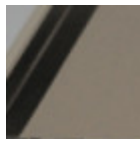


Grafite steel

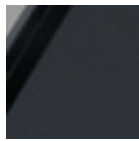


Multicolor steel

Coating



Matt sand antiscratch glass

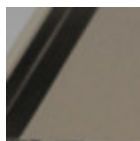


Matt graphite antiscratch glass

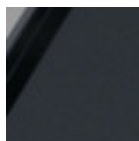


Extra clear matt white antiscratch glass

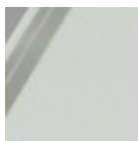
Extensions



Matt sand antiscratch glass



Matt graphite antiscratch glass



Extra clear matt white antiscratch glass

Dimensions

Dimensions not found or type unknown

	A	B	C	D
	(cm)	(cm)	(cm)	(cm)
	(inch)	(inch)	(inch)	(inch)
160/240x106	72	160	106	240
(cm)	28.3	63	41.7	94.5
(inch)				

	A	B	C	D
	(cm)	(cm)	(cm)	(cm)
	(inch)	(inch)	(inch)	(inch)
190/290x106	72	190	106	290
(cm)	28.3	74.8	41.7	114.2
(inch)				

Volumetric Details

Weight 233 Kg

Volume 1.12 mc

Package 4

Downloads

Pechino fix 3D (zip) - <https://www.midj.com/images/uploads/resources/pechino-3d.zip>

Pechino extensible 3D (zip) - <https://www.midj.com/images/uploads/resources/pechino-all-3d.zip>