


FENIX NTM[®]



NANOTECH MATT MATERIAL
FOR INTERIOR DESIGN.



An abstract geometric composition featuring several overlapping planes and surfaces. The color palette is primarily dark grey and light grey, with a prominent diagonal band of deep blue. The lighting creates strong shadows and highlights, emphasizing the three-dimensional quality of the forms. The overall aesthetic is clean, modern, and architectural.

FENIX NTM[®],
NANOTECH MATT MATERIAL
FOR INTERIOR DESIGN.
MADE IN ITALY.

A TIMELESS MATERIAL
FOR NEVERENDING
DESIGN STORIES.

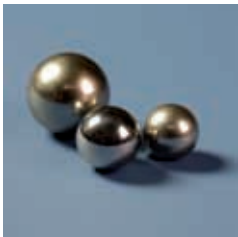
FENIX NTM® is an innovative material created for interior design applications by Arpa Industriale.

It is suitable for both vertical and horizontal use.

The external surface of FENIX NTM involves the use of nanotechnology and it is characterized by next generation acrylic resins, hardened and fixed with Electron Beam Curing process.

With low light reflectivity, its surface is extremely opaque, anti-fingerprint and features a very pleasant soft touch.

FENIX NTM is suitable for different interior design applications: kitchen, hospitality, healthcare, transportation, bathrooms, furniture (tables, bookshelves, partitions, chairs).



OPEN YOUR MIND AND CREATE SURFACES FOR NEW THOUGHTS.

FENIX NTM® è un materiale innovativo di Arpa Industriale creato per l'interior design, adatto ad applicazioni sia verticali sia orizzontali. La parte esteriore di FENIX NTM è ottenuta con l'ausilio di nanotecnologie ed è caratterizzata da una superficie trattata con resine acriliche di nuova generazione, indurite e fissate attraverso il processo di Electron Beam Curing. Con una bassa riflessione della luce, la sua superficie è estremamente opaca, anti impronte digitali e piacevolmente soft touch. FENIX NTM è adatto alle molteplici applicazioni tipiche dell'interior design: cucine, hospitality, healthcare, trasporti, bagni, elementi di arredo (tavoli, librerie, partizioni, sedie).

FENIX NTM® est un produit innovant créé par Arpa Industriale pour des applications de design intérieur. Il est parfaitement adapté aux applications verticales et horizontales. La surface décorative de FENIX NTM est obtenue par l'utilisation de la nanotechnologie combinée à des résines acryliques de nouvelle génération, durcies par un processus de polymérisation par faisceau électronique. Avec une très faible réflectivité, sa surface est extrêmement opaque, anti-traces de doigts et offre un toucher très soyeux. FENIX NTM est recommandé pour de nombreuses applications de design intérieur telles que cuisines, hôtellerie, hôpitaux, transports, salles de bains, mobilier (tables, bibliothèques, cloisons, chaises).

FENIX NTM® ist ein bahnbrechendes Material kreiert von Arpa speziell für den Einsatz im Interiorbereich. Es ist sowohl für vertikale als auch horizontale Applikationen geeignet. Die dekorative Oberfläche wird durch eine spezielle Nanotechnologie und den Einsatz eines besonderen Herstellverfahrens – der Elektronenstrahlhärtung – veredelt. Zudem wurde eine neue Generation von Acrylharz hierfür von Arpa entwickelt, welcher in unserem Werk selbst hergestellt wird. So stellen wir durch eigene Herstellung aller Komponenten die gleichbleibend hohe Qualität von FENIX NTM sicher. Es zeichnet sich durch eine sehr geringe Lichtreflexion aus, ist dadurch extrem matt und verleihen der Oberfläche einen weichen, samtigen Touch. FENIX NTM eignet sich für die vielseitigsten Anwendungen im Innenbereich: Küche, Sanitär, Transport, Bad und Möbel (Tische, Regale, Abtrennungen, Stühle).

FENIX NTM® es un material innovador creado por Arpa Industriale para aplicaciones de diseño de interior, adecuado para aplicaciones tanto verticales como horizontales. La superficie exterior de FENIX NTM se obtiene con la aplicación de la nanotecnología y se caracteriza por el uso de resinas acrílicas que son endurecidas y fijadas a través de un proceso de Electron Beam Curing. Con una baja reflectancia de la luz, su superficie es extraordinariamente mate, antihuella digital, agradable y suave al tacto. FENIX NTM es adecuado para múltiples aplicaciones del diseño de interior: cocina, hostelería, sanidad, transportes, baños, muebles (mesas, estanterías, tabiques, sillas).





COLOURS

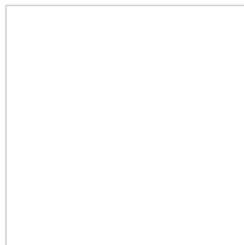
0029 Bianco Malè



0032 Bianco Kos



0030 Bianco Alaska



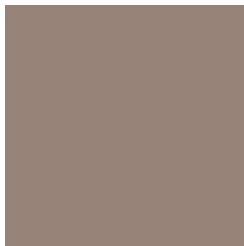
0719 Beige Luxor



0716 Rosa Colorado



0717 Castoro Ottawa



0718 Grigio Londra



0725 Grigio Efeso



0724 Grigio Bromo

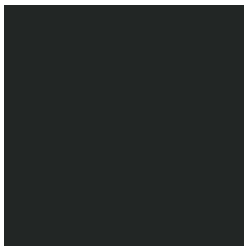


COLOURS

0721 Blu Delft



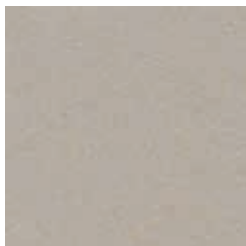
0720 Nero Ingo



2638 Titanio Doha



2628 Zinco Doha



2629 Bronzo Doha

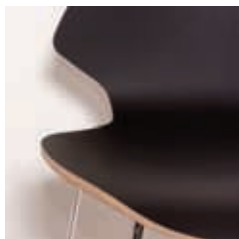


2630 Piombo Doha








COLLECTION

Code	Name
0029	Bianco Malè
0030	Bianco Alaska
0032	Bianco Kos
0716	Rosa Colorado
0717	Castoro Ottawa
0718	Grigio Londra
0719	Beige Luxor
0720	Nero Ingo
0721	Blu Delft
0724	Grigio Bromo
0725	Grigio Efeso
2628	Zinco Doha
2629	Bronzo Doha
2630	Piombo Doha
2638	Titanio Doha



COLLECTION

Thickness	Decor	Type/Core	Size	
 mm			 3050x1300 mm	 4200x1600 mm
0,9 mm	All FENIX NTM range	Standard	•	•
1,2 mm	All FENIX NTM range	With matched colour core	•	•
10,0 mm	All FENIX NTM range except 0716, 0721	Double sided with matched colour core	•	•
	All FENIX NTM range except 0029, 0030, 0032, 0720	Single sided black core	•	•
	All FENIX NTM range	Double sided black core	•	•
12,0 mm	All FENIX NTM range except 0716, 0721	Double sided with matched colour core	•	•
	All FENIX NTM range except 0029, 0030, 0032, 0720	Single sided black core	•	•
	All FENIX NTM range	Double sided black core	•	•

Special thicknesses are available upon request with a minimum order quantity.

4,0 mm 6,0 mm 8,0 mm	All FENIX NTM range except 0716, 0721	Double sided with matched colour core	•	•
	All FENIX NTM range	Double sided black core	•	•

Customization available upon request for all thicknesses.

Protective film included.





Pinacoteca di Brera Museum, Milano



Temporary Exhibition, Porta Nuova Area, Milano



Musme, Museum of the History of Medicine, Padova



MATT AND SOFT TOUCH SURFACE.

Thanks to the use of last generation acrylic resins, FENIX NTM's surface is extremely closed.

The irregular surface topography has as a result a very low light reflectivity (a surface specular reflectance of 1,5 at 60°) and the soft touch effect.

Grazie all'uso di resine acriliche di ultima generazione, la superficie di FENIX NTM risulta essere estremamente chiusa.

La topografia irregolare della superficie ha come risultato una bassa riflessione della luce (valore di riflessione speculare: 1,5 a 60°) e l'effetto soft touch.

Grâce à l'utilisation de résines acryliques de dernière génération, la surface de FENIX NTM est extrêmement fermée.

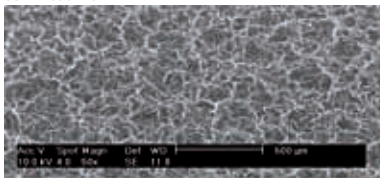
La topographie irrégulière a comme résultat une très faible réflectivité de la lumière (réflectance de la surface : 1,5 à 60°) et le toucher soyeux.

Dank einer neuen Generation acrylharz bietet FENIX NTM eine extrem geschlossene Oberfläche und eine besonders weiche Haptik. Die unebene Oberfläche im Nanobereich sorgt zudem für eine besonders geringe Lichtreflexion (1,5 bei einem Winkel von 60 Grad).

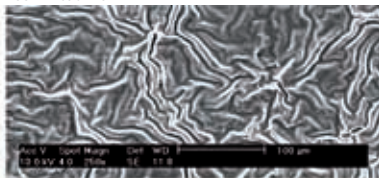
Gracias a la utilización de resinas acrílicas de última generación, la superficie de FENIX NTM es extremadamente densa.

Su topografía irregular resulta en una reflectancia mínima de la luz (reflectancia especular de superficie: 1,5 a 60°) y un efecto suave al tacto.

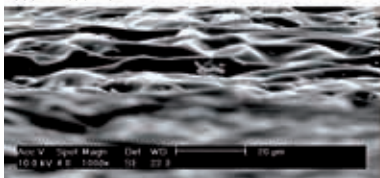
50x Tilted view



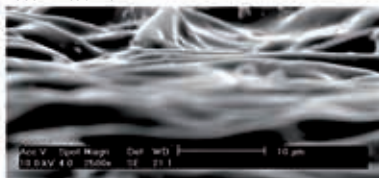
250x Tilted view



1000x Tilted view



2500x Tilted view



FEATURES

LOW LIGHT REFLECTIVITY, EXTREMELY MATT SURFACE
THERMAL HEALING OF SUPERFICIAL MICROSCRATCHES
ANTI-FINGERPRINT
SOFT TOUCH
RESISTANCE TO SCRATCHES AND ABRASION
RESISTANCE TO DRY HEAT
HIGH RESISTANCE TO ACID SOLVENTS AND HOUSEHOLD REAGENTS
ENHANCED ANTI-BACTERIAL PROPERTIES



Bassa riflessione della luce, superficie estremamente opaca
Riparabilità termica dei micrograffi superficiali
Anti-impronta
Morbidezza al tatto
Resistenza ai graffi e all'abrasione
Resistenza al calore secco
Elevata resistenza a solventi acidi e ai reagenti di uso domestico
Alta attività di abbattimento della carica batterica

Geringe Lichtreflexion, extrem matte Oberfläche
Thermische Bearbeitung von oberflächlichen Kratzern
Keine Fingerabdrücke
Weicher Touch
Resistent gegen Kratzer und Abrieb
Resistent gegen trockene Hitze
Resistent gegen säurehaltige und alle haushaltsüblichen Reiniger
Verbesserte antibakterielle Eigenschaften

Faible réflectivité, surface extrêmement mate
Réparation thermique des micro-rayures superficielles
Aucune trace de doigts
Toucher soyeux
Résistance aux rayures et à l'abrasion
Résistance à la chaleur sèche
Grande résistance aux solvants et nettoyeurs ménagers
Propriétés antibactériennes renforcées

Reflectancia mínima de la luz, superficie extremadamente mate
Reparabilidad térmica de microarañazos superficiales
Anti-huella digital
Suave al tacto
Resistencia a los arañazos y a la abrasión
Resistencia al calor seco
Alta resistencia a disolventes ácidos y reactivos para uso doméstico
Propiedad anti-bacterias reforzada

FEATURES



Hygienic

Igigienico
Hygiène
Hygienisch
Higiénico



Resistance to impact

Resistenza all'urto
Résistance aux chocs
Schlagfest
Resistencia al impacto



Suitable for contact with food

Idoneo al contatto con gli alimenti
Agréé pour le contact alimentaire
Geeignet für den Kontakt mit Lebensmitteln
Apto para el contacto con alimentos



Lightfastness

Stabilità alla luce
Résistance à la lumière
Lichtecht
Estabilidad a la luz



Easy to clean

Facile da pulire
Facilité d'entretien
Einfach zu Reinigen
Fácil de limpiar



Excellent intensity and colour depth

Eccellente intensità e profondità del colore
Profondeur et intensité des couleurs
Exzellente Farbtiefe und dekorativer Ausdruck
Excelente intensidad y profundidad del color



Mold-resistant

Antimuffa
Résistance aux moisissures
Schimmelsicher
Antioxidante libre de moho



Rub resistance

Resistenza allo strofinamento
Résistance au frottement
Wischfest
Resistente a la fricción regular



Antistatic

Antistatico
Antistatique
Antistatisch
Antiestático



Self-supporting (for 6 - 8 - 10 - 12 mm)

Autoportante (per gli spessori 6 - 8 - 10 - 12 mm)
Autoportant (en 6 - 8 - 10 - 12 mm)
Selbsttragend (in den Stärken 6 - 8 - 10 - 12 mm)
Autoportante (en 6 - 8 - 10 - 12 mm)



Hydro-repellent

Idrorepellente
Imperméable
Wasserabweisend
Hidrófugo



Dimensional stability even at high temperature changes

Stabilità dimensionale in presenza di elevata variazione termica
Stabilité dimensionnelle même en cas de grande variation thermique
Hohe dimensionale Stabilität auch bei großen Temperaturschwankungen
Estabilidad dimensional en caso de elevada variación térmica



APPLICATIONS

KITCHEN
BATHROOM
FURNITURE
RETAIL
HEALTHCARE
HOSPITALITY
OFFICE
TRANSPORTATION
ELEVATORS
DOORS

Cucina
Bagno
Arredamento
Retail
Healthcare
Hospitality
Uffici
Trasporti
Ascensori
Porte

Cuisines
Salles de bain
Mobilier
Agencement
Santé
Hotels et restaurants
Bureaux
Transports
Ascenseurs
Portes

Küche
Bad- und Sanitärbereich
Möbel
Ladenbau
Bewirtung
Gesundheitswesen
Büro
Transport
Aufzüge
Türen

Cocina
Baño
Mobiliario
Comercios
Sector sanitario
Hostelería
Oficina
Transportes
Ascensores
Puertas

HONOURS AND AWARDS



First Prize
Design Category



Best Design
Material



Best of the Best



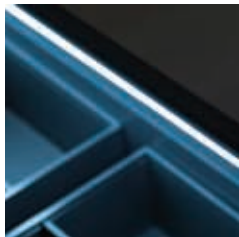
New Product Award



Honourable Mention
ADI Compasso d'Oro



Product
Best of the Best



OVER 60 YEARS OF RESEARCH, TECHNOLOGY AND INNOVATION.

Since 1954 Arpa Industriale has been designing and manufacturing high quality HPL panels for the most diverse applications. In 2013 Arpa launched FENIX NTM, the innovative smart material for interiors developed by ArpaLab's international multidisciplinary team with proprietary in-house technologies. Arpa: open innovation for interior design.

Dal 1954 Arpa Industriale progetta e produce pannelli con tecnologia HPL di alta qualità per molteplici applicazioni. Nel 2013 Arpa lancia FENIX NTM, l'innovativo smart material per l'interior design sviluppato grazie a tecnologie proprietarie da ArpaLab, un team di ricerca internazionale e multidisciplinare. Arpa: open innovation for interior design.

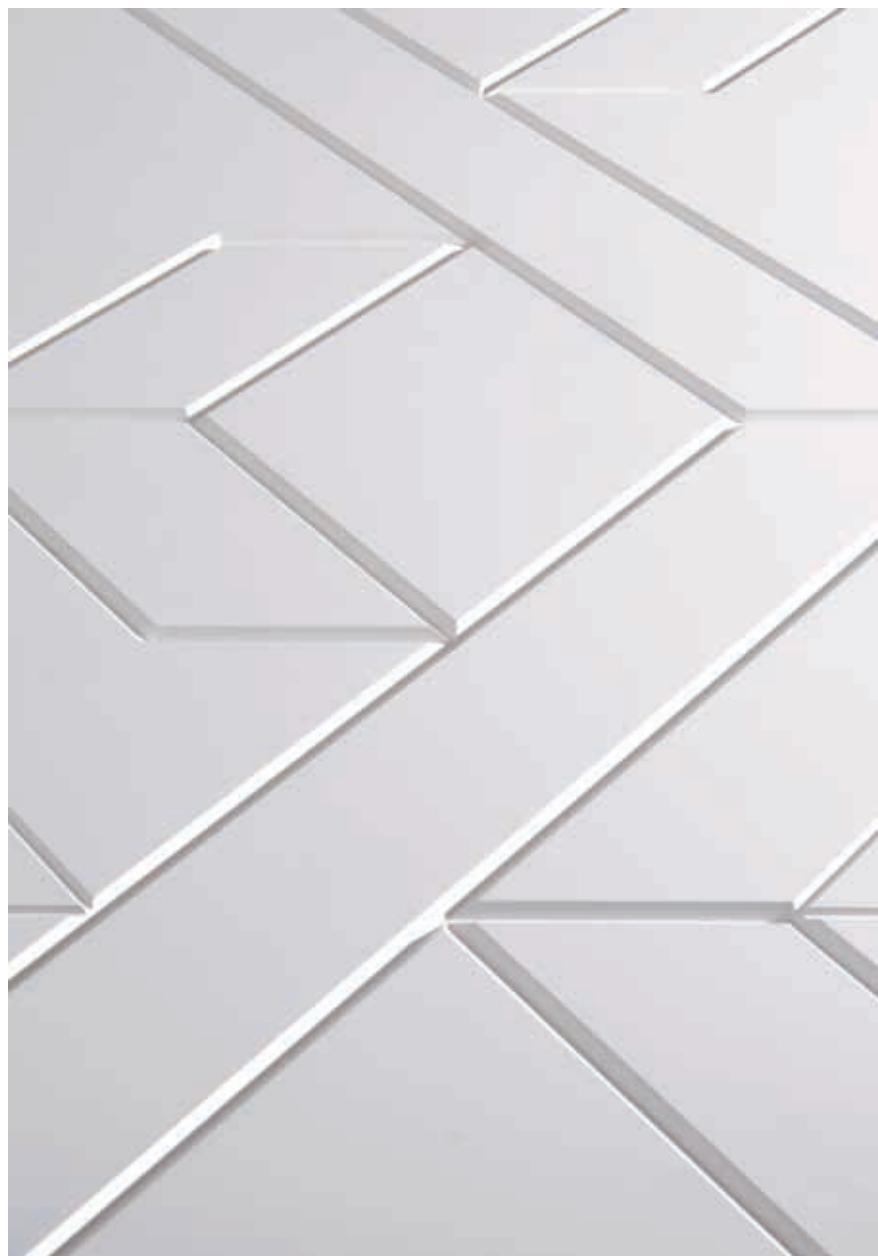
Depuis 1954, Arpa Industriale conçoit et fabrique des panneaux HPL haut de gamme pour les applications les plus diverses. En 2013, Arpa a lancé FENIX NTM, le matériau intelligent innovant développé en interne avec des technologies exclusives par ArpaLab, une équipe internationale et pluridisciplinaire, pour le design intérieur. Arpa : open innovation for interior design.

Seit 1954 designt und fertigt Arpa Industriale sehr hochwertige Hochdrucklamine für die vielfältigsten Anwendungen im Innenbereich. 2013 wurde FENIX NTM vorgestellt: das innovative smarte supermatte Material entwickelt von ArpaLab's internationalem Team aus Designern und Produktentwicklern. Arpa: open innovation for interior design.

Desde 1954, Arpa Industriale ha estado diseñando y produciendo paneles HPL de alta calidad para todo tipo de aplicaciones. En 2013, Arpa lanzó FENIX NTM, un material innovador e inteligente para interiores desarrollado con tecnologías propias por ArpaLab, un equipo internacional multidisciplinario. Arpa: open innovation for interior design.

DISCLAIMER

The disclaimer that follows is a summary of the applicable full disclaimer (which can be found on arpaindustriale.com). The information provided by Arpa Industriale S.p.A. ("Arpa") in this document is solely indicative. Arpa is unable to warrant the accuracy and completeness of this information. No rights can be derived from the information provided; the use of the information is at the other party's risk and responsibility. This document does not guarantee any properties of Arpa's products. Arpa does not warrant that the information in this document is suitable for the purpose for which it is consulted by the other party. The document does not contain any design, structural calculation, estimate or other warranty or representation that customers and third parties may rely on. Colours used in Arpa's communications (including but not limited to printed matter) and in samples of Arpa's products may differ from the colours of the Arpa's products to be supplied. Arpa's products and samples are produced within the specified colour tolerances and the colours (of production batches) may differ, even if the same colour is used. The viewing angle also influences the colour perception. Customers and third parties must have a professional adviser inform them about (the suitability of) Arpa's products for all desired applications and about applicable laws and regulations. Arpa reserves the right to change (the specifications for) its products without prior notice. To the maximum extent permitted under the applicable law, Arpa is not liable (neither contractual nor non-contractual) for any damage arising from or related to the use of this document, except if and to the extent that such damage is the result of wilful misconduct or gross negligence on the part of Arpa and/or its management. All oral and written statements, offers, quotations, sales, supplies, deliveries and/or agreements and all related activities of Arpa are governed by the General Terms and Conditions of Arpa Industriale S.p.A. All oral and written statements, offers, quotations, sales, supplies, deliveries and/or agreements and all related work of Arpa USA, Inc. ("Arpa USA") are governed by the Arpa USA General Terms and Conditions of Sale. All intellectual property rights and other rights regarding the content of this document (including logos, text and photographs) are owned by Arpa and/or its licensors.



FENIX **NTM**[®]
≡≡≡

made in Italy by Arpa Industriale

Arpa Industriale S.p.A.
Via Piumati, 91
12042 Bra (CN) - Italy
Tel. +39 0172 436111
Fax +39 0172 431151
E-mail: arpa@arpaindustriale.com
export@arpaindustriale.com

A600555 - 09/2016

fenixntm.com

FOLLOW US

